



**PD MED Collaborators  
Seventh Annual Meeting, 2006  
Session 1, Tuesday 23rd May**

**Current and Future Management of  
Mental Health Problems in Parkinson's**

***Management of Lewy Body  
Dementia and Parkinson's disease  
dementia***

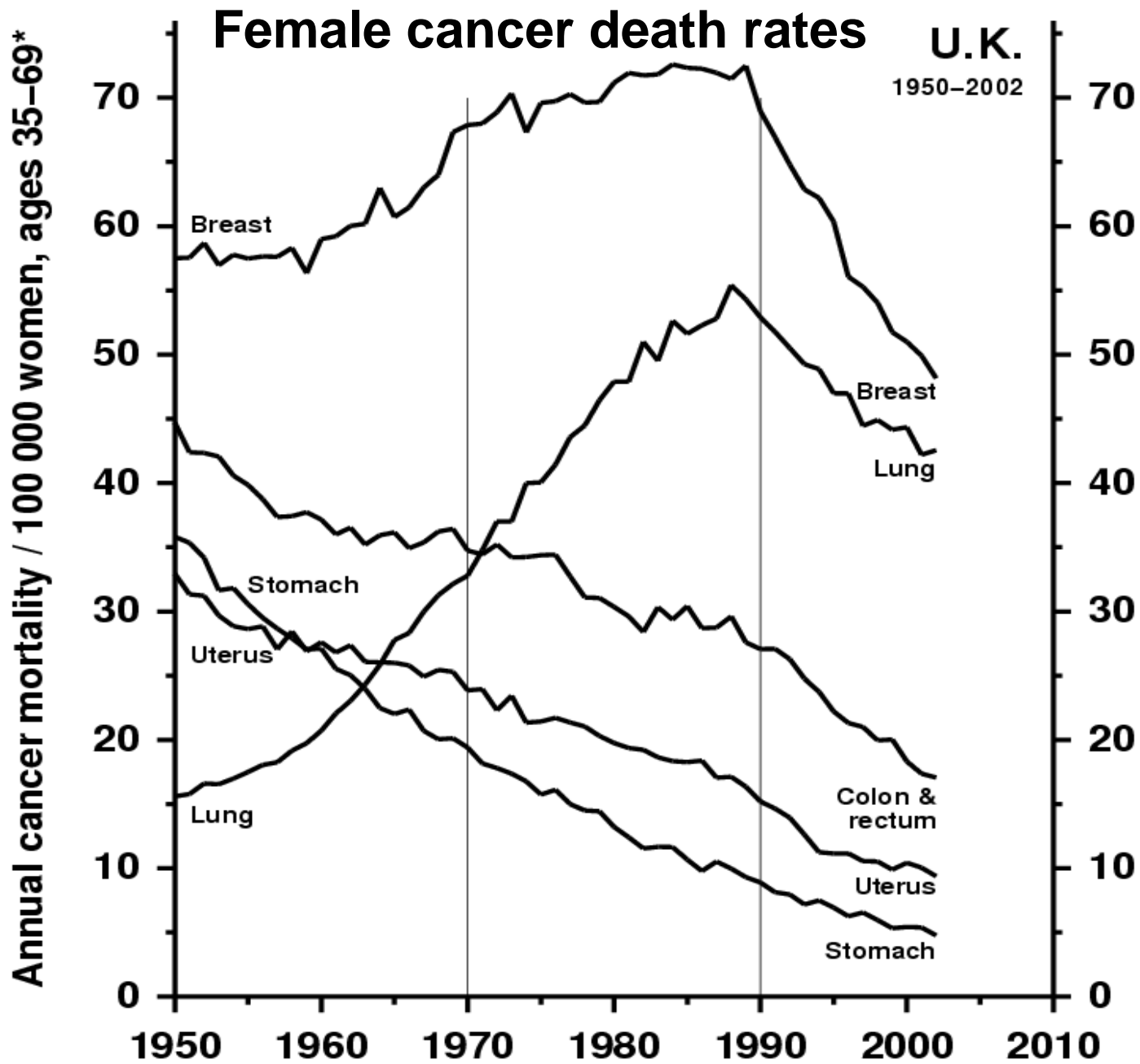
**Professor David Burn**



# **PD MED Collaborators Seventh Annual Meeting, 2006**

**Sessions 2 & 3, Wednesday 24th May  
(Botanical gardens)**

- Current and Future Management of Mental Health Problems in Parkinson's disease (continued)**
- The Future of Parkinson's Disease Clinical Research in the NHS**
- Trial updates: PD MED, PD GEN, PD SURG, PD OT**



\*Mean of annual rates in the component 5-year age groups

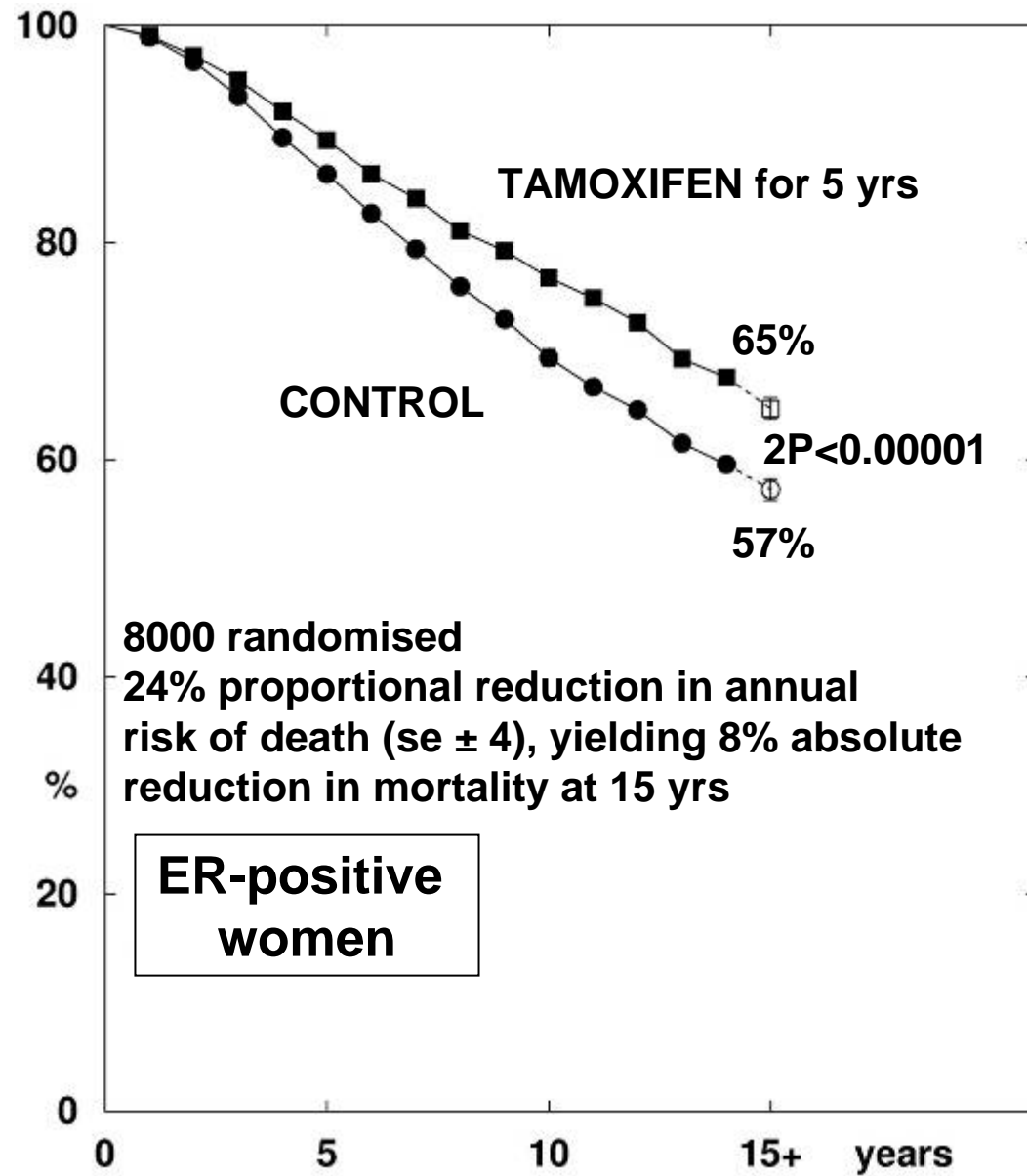
Source: WHO mortality & UN population estimates

# Declining cancer death rates

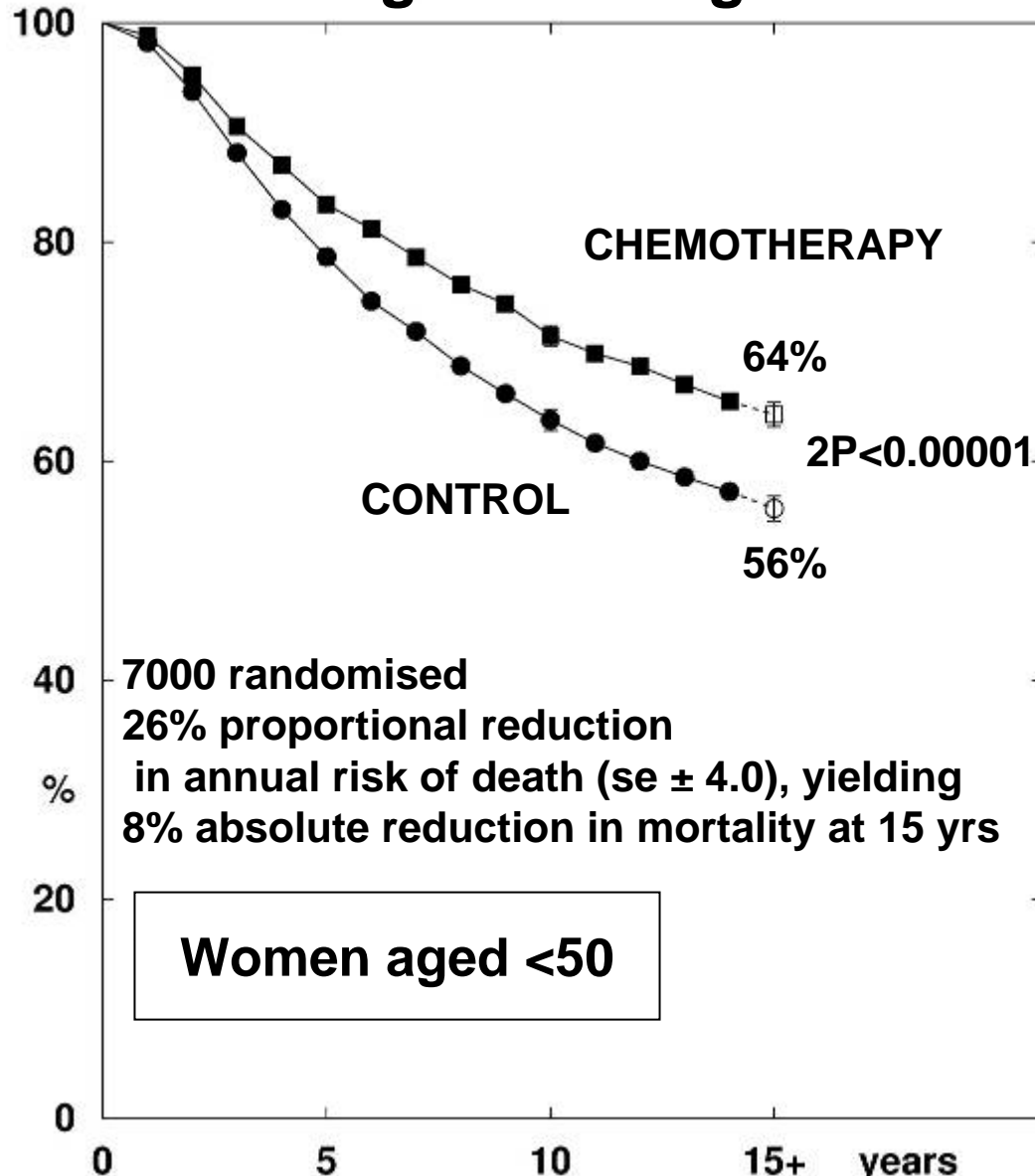
- Reliable quantification of hazards of tobacco has led to a sharp decline in smoking and, as a consequence, lung cancer (and other mortality)
- Reliable quantification of the MODERATE efficacy of adjuvant treatments has led to sharp falls in breast cancer mortality

# EBCTCG meta-analysis of all randomised trials testing 5 years of tamoxifen

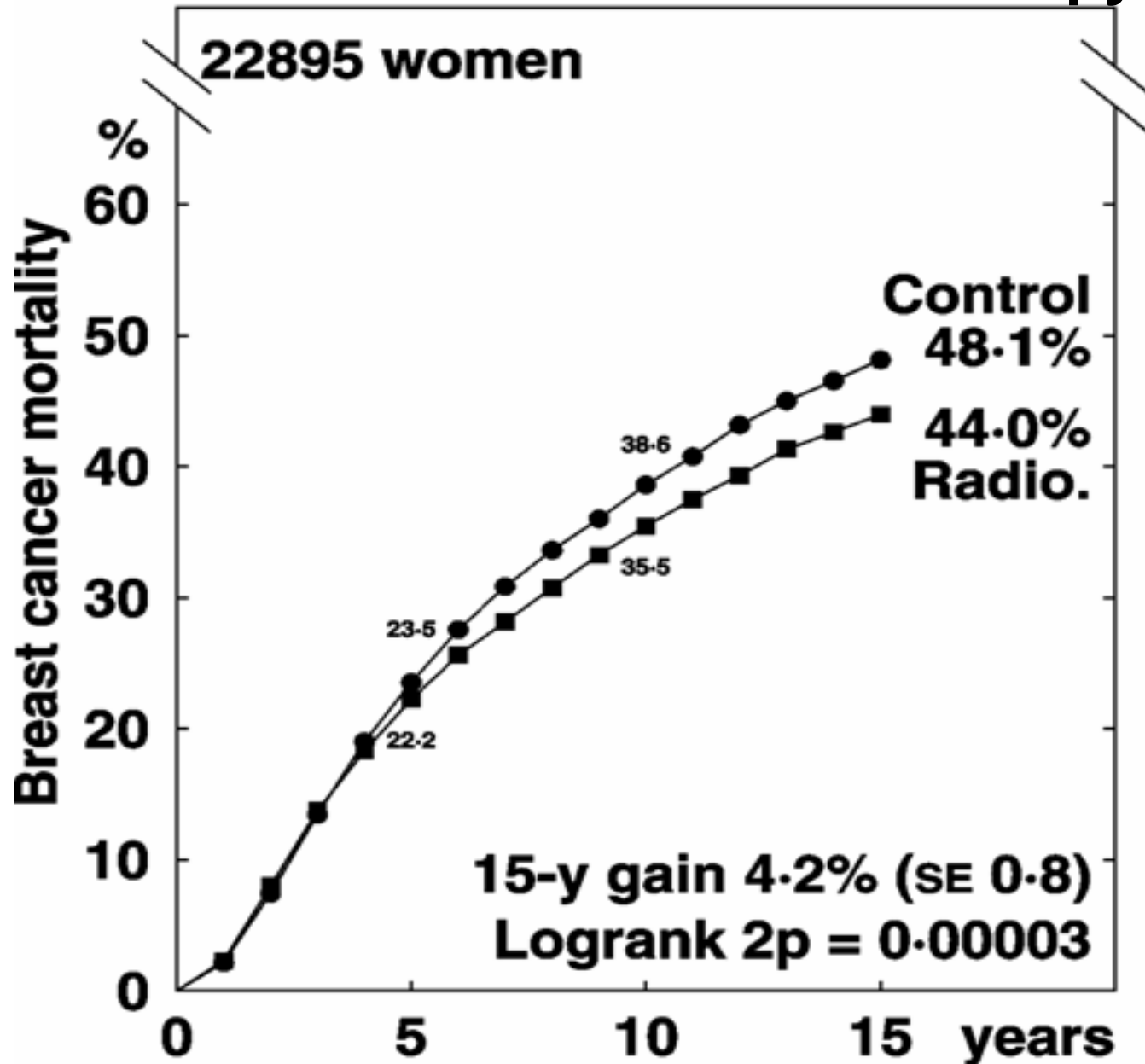
Moderate treatment benefits are more plausible than large benefits and they are important – for example, tamoxifen for breast cancer



# EBCTCG meta-analysis of all randomised trials testing multiple agent chemotherapy among women aged <50



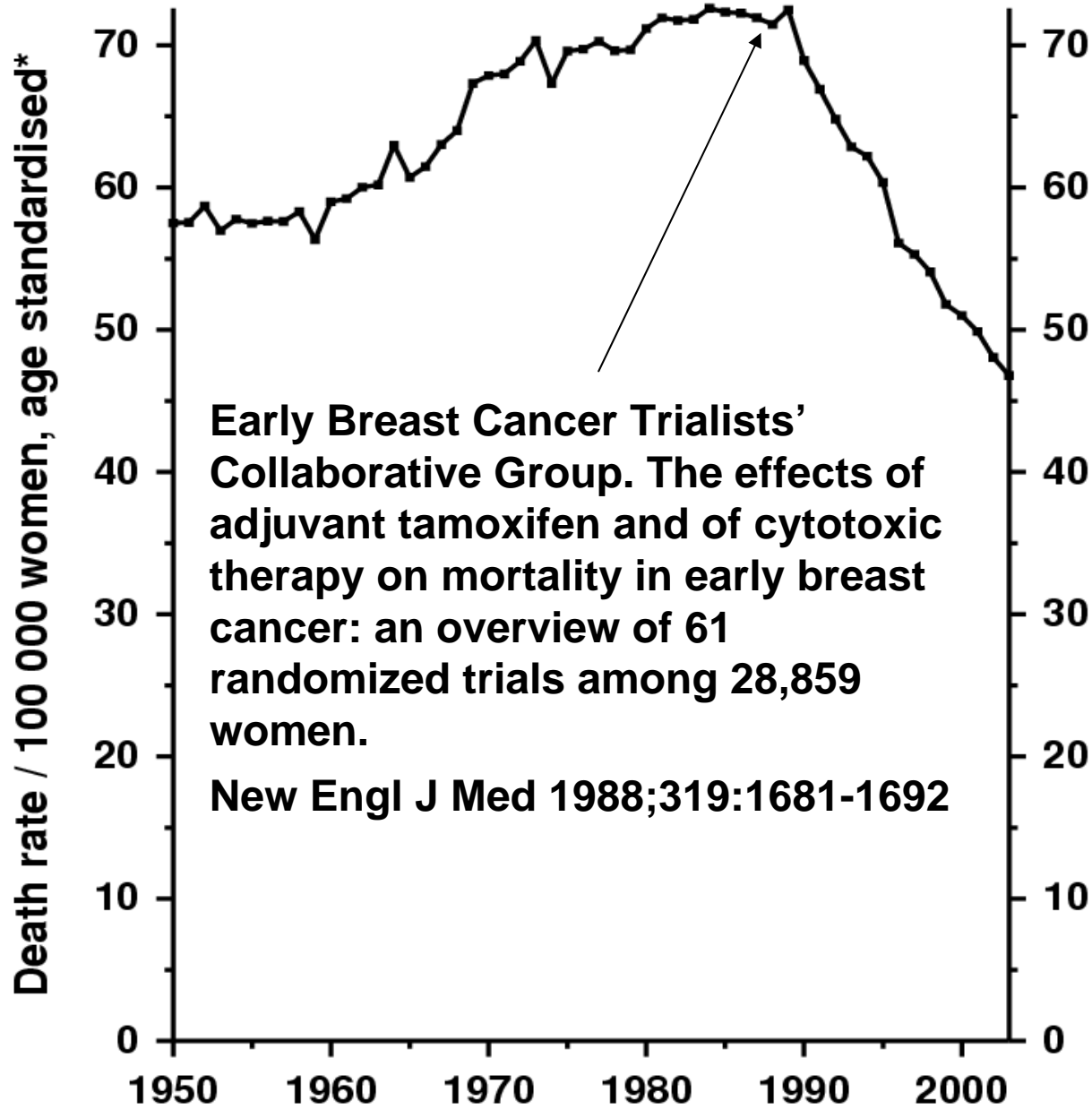
# EBCTCG meta-analysis of all randomised trials of radiotherapy



# Fifty percent fewer breast cancer deaths by combining three moderately effective treatments

- Different types of treatment (radiotherapy, chemotherapy, hormonal therapy) have largely independent effects so benefits are additive
- Therefore, overall risk ratio for breast cancer death  $\approx 0.9$  (Relative risk with radiotherapy)  $\times 0.8$  (RR with chemotherapy)  $\times 0.7$  (RR with tamoxifen)  $= 0.5$

# UNITED KINGDOM 1950–2003: Females Breast cancer mortality at ages 35–69



# Neurodegenerative diseases

- ‘Success’ is harder to measure in chronic degenerative diseases than in cancer
- However, moderate improvements in treatment are equally plausible and equally important
- Large-scale collaborative research is essential for reliable assessments of treatment effectiveness



**PD MED Collaborators  
Seventh Annual Meeting, 2006  
Session 1, Tuesday 23rd May**

**Current and Future Management of  
Mental Health Problems in Parkinson's**

***Management of Lewy Body  
Dementia and Parkinson's disease  
dementia***

**Professor David Burn**